

Weed Management Update



UNIVERSITY OF GEORGIA
EXTENSION



UPW
using pesticides wisely



GEORGIA DEPARTMENT
OF AGRICULTURE

Agenda

- 1. What's new**
- 2. What's gone**
- 3. Cool stuff!!!**

New Labels

Select Max -- okra

Select Max – green onions

Expected Labels --- Soon

Reflex -- sweet potato

Reflex – eggplant

What did we lose?

Paladin Fumigant

2020 Fumigant Systems For Weeds

~~1. Paladin Pic + Metam TIF~~

All common
weeds

2. T2/Pic/Metam* TIF

~~3. Paladin Pic TIF~~

Good nutsedge, watch
grass and pigweed

4. T2/Pic/Metam LDPE

Watch nutsedge, good
grass and pigweed

5. Pic Chlor 60 TIF

Watch nutsedge, grass,
and pigweed...
...nematodes??

*UGA 3-WAY: system of Telone II, Pic, Metam



Cool Research



**No Label Currently; Hopefully
BASF Wont Back Out On Us**



Cool Research



**No Label Currently; Hopefully
BASF Wont Back Out On Us**

- 1. Row middles in plastic production**
- 2. Prepare to plant in bareground**
- 3. Prepare to plant in mulch**



Row - Middle

Rely Row Middle

Rely Directed $\frac{1}{4}$ X rate

Rely Topical

Rely Applied Over Mulch



washed



NOT washed

Bareground – preplant

Huge Concern for Transplants

Transplant Cucumber Response to Rely

None

7 DBP

4 DBP

1 DBP



48 oz/A
Rely

Injury 20 DAP. Tifton, GA. 2018. DBP = days before planting.

POSTER



Cool Research



**No residual activity so plant
what and when you want?**

Comes off plastic easy!



Cool Research



**No residual activity so plant
what and when you want?
Comes off plastic easy!**



Transplant Cucumber Response to PowerMax

None

7 DBP

4 DBP

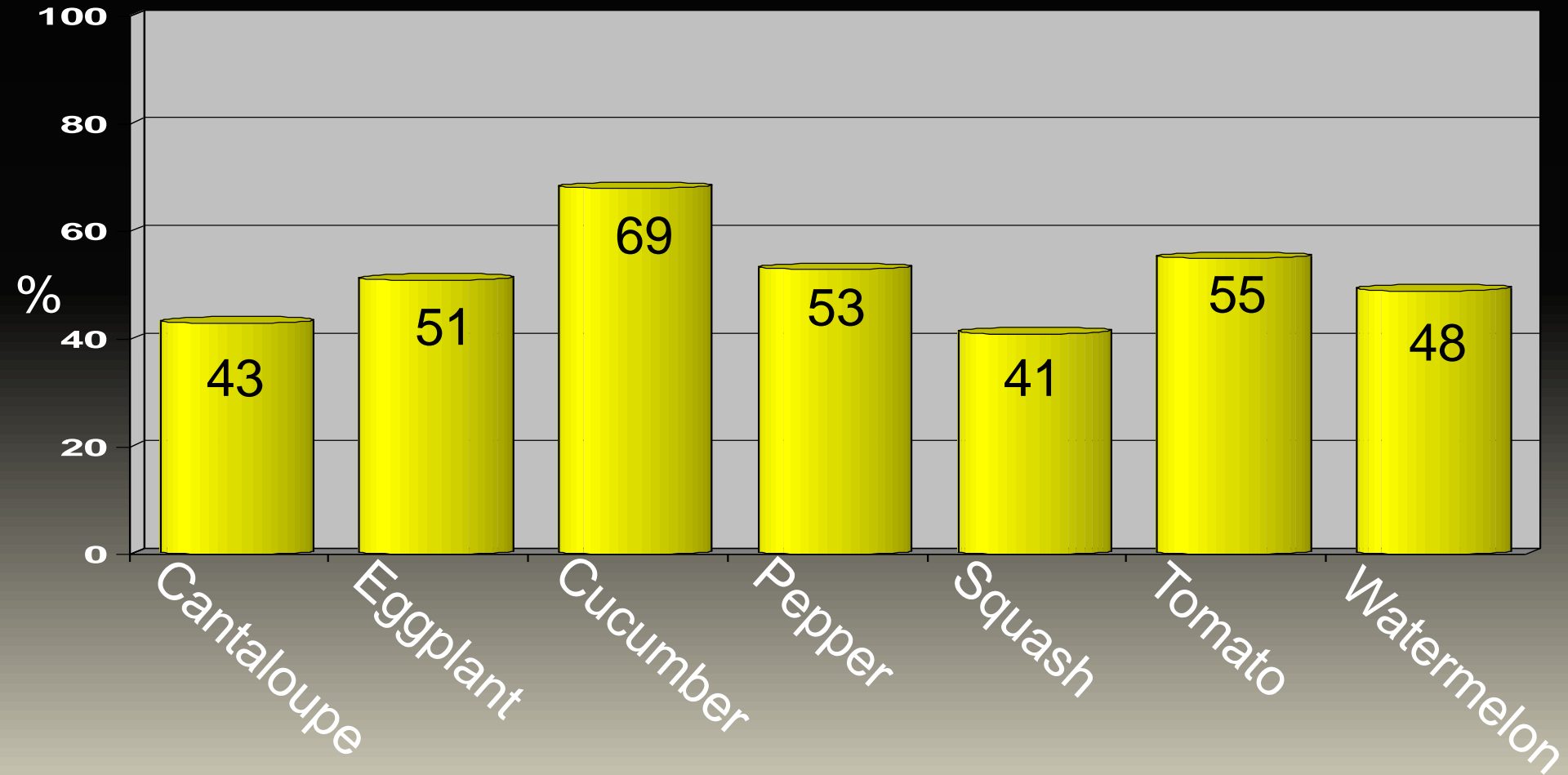
1 DBP



64 oz/A
PowerMax

Injury 14 DAT; Tifton. GA 2018. DBP = days before planting.

Vegetable Transplant Injury From PowerMax at 64 oz/A Applied Preplant Bareground.



Injury 21 DAP. Tifton, GA. 2019. Herbicide applied 3 d before transplant.

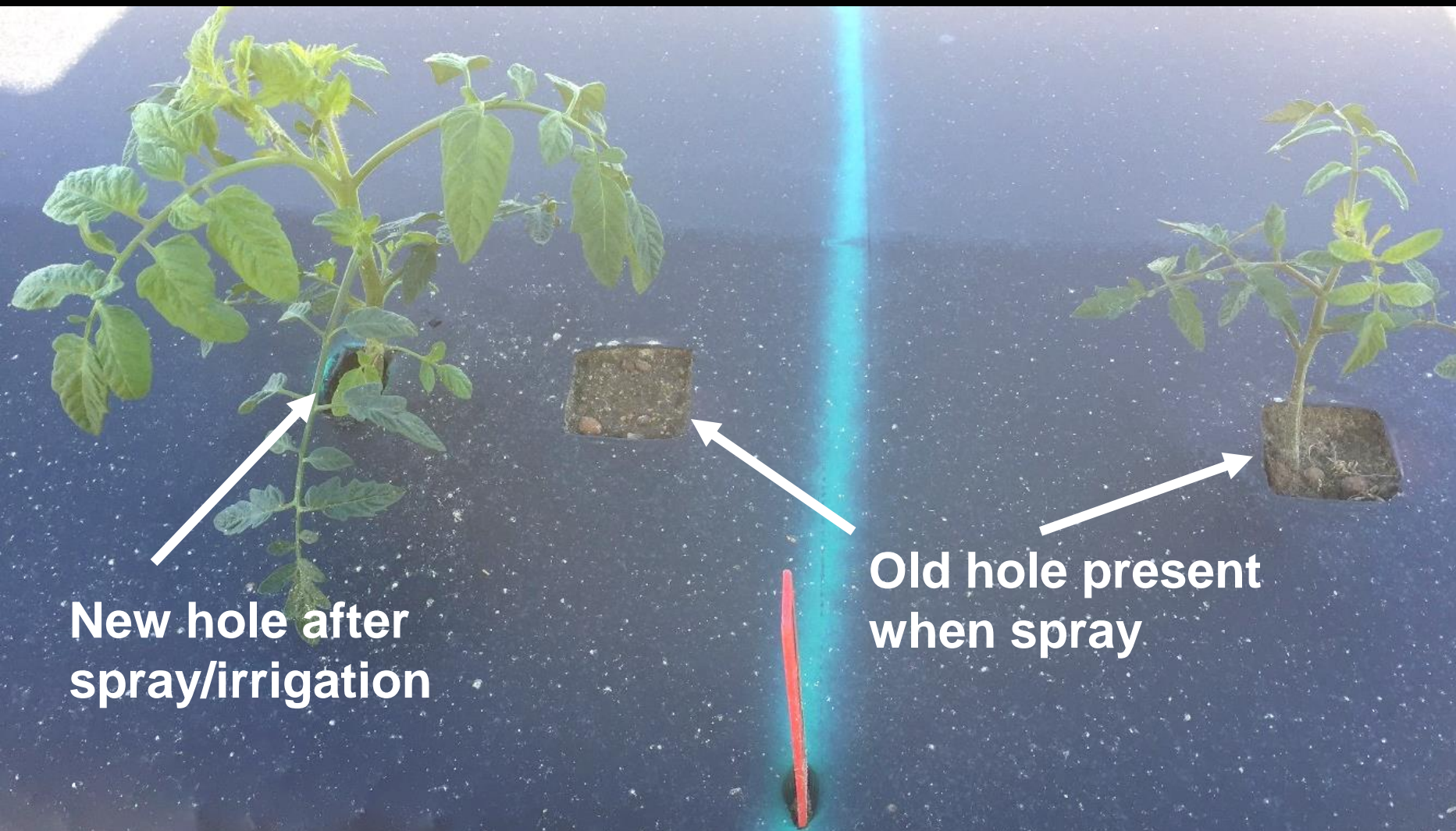
Yellow squash response to 64 oz/A of PowerMax II Preplant



Roundup Over Mulch Prior to Transplant

- 1. We know you have to wash off with 0.5" in single event**
- 2. What happens when the Roundup ends up in an old hole**

Roundup PMAX 64 oz/A Applied Over Mulch Followed by 0.5" Irrigation Before Transplant



New hole after
spray/irrigation

Old hole present
when spray

Influencing Injury Potential

1. Soil – sand, organic matter
2. Rate
3. Tillage
4. Irrigation

Cole crop response to Roundup preplant



Non-treated



RU PMAX



+ Irrigation



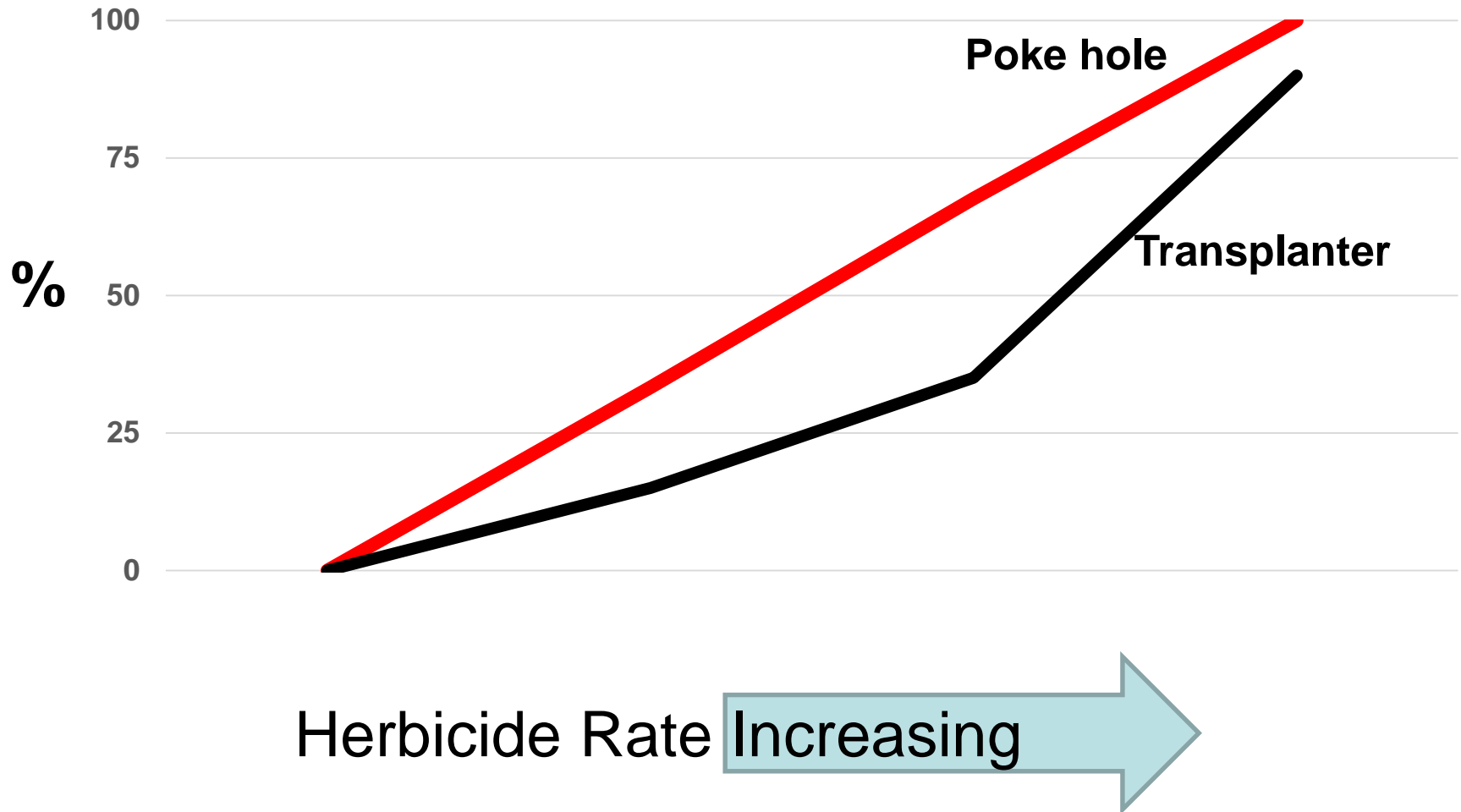
+ tillage

Influencing Injury Potential

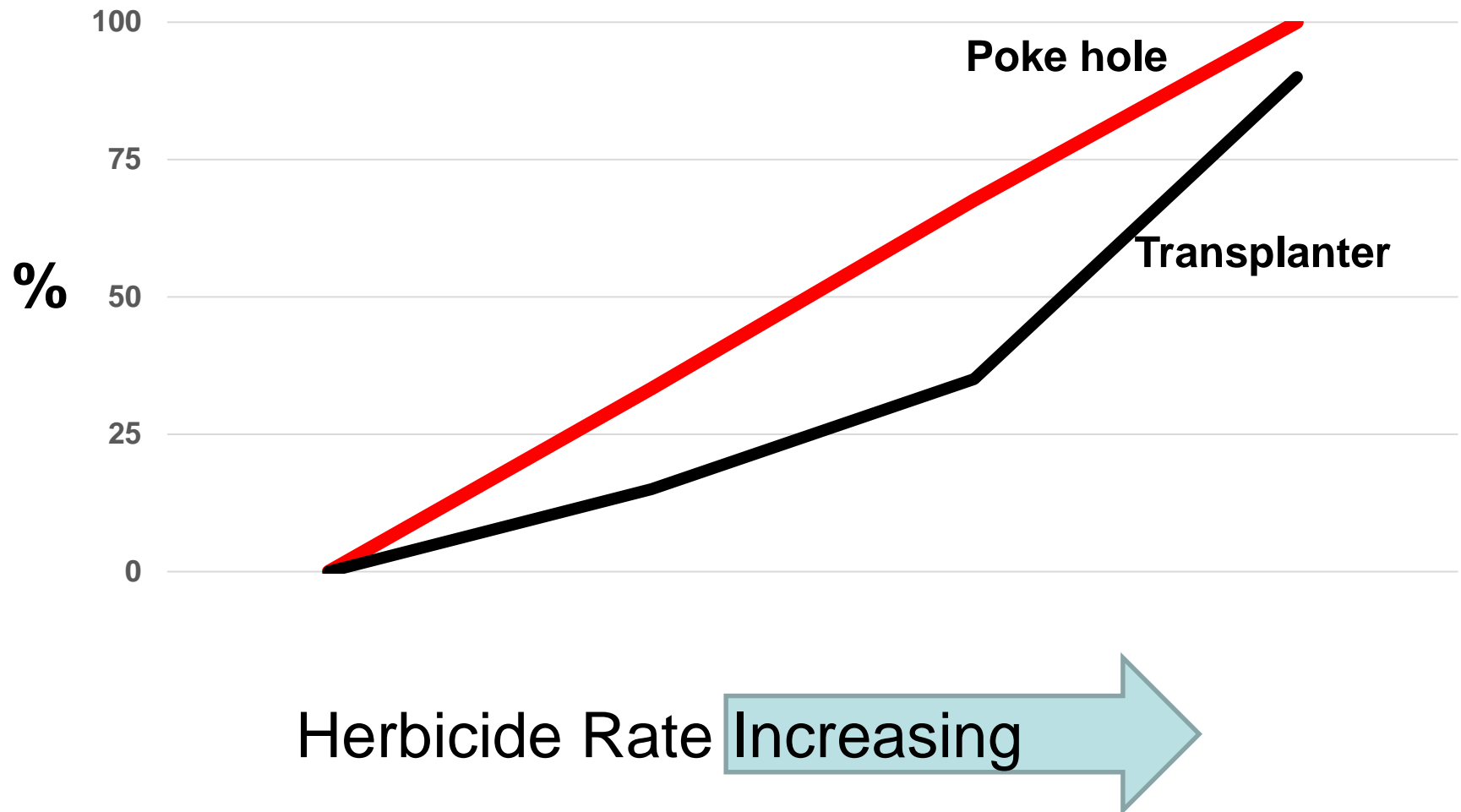
1. Soil – sand, organic matter
2. Rate
3. Tillage
4. Irrigation
5. Transplanting method



Example of Planter Type Influencing Vegetable Herbicide Injury



Example of Planter Type Influencing Weed Control



New RU PMAX II Label – Transplants

Soil >85% sand and/or < 0.5% O.M.

Bareground:

≤ 32 oz/A

≥ 3 days

0.5" water

Mulch:

≤ 32 oz/A

≥ 3 days

0.5" water

32 to 64 oz/A

≥ 10 days

0.5" water



1. Residual herbicides are key in crop.
2. Between Crops: Max Roundup allowable followed by Gramoxone 5 to 7 d later.

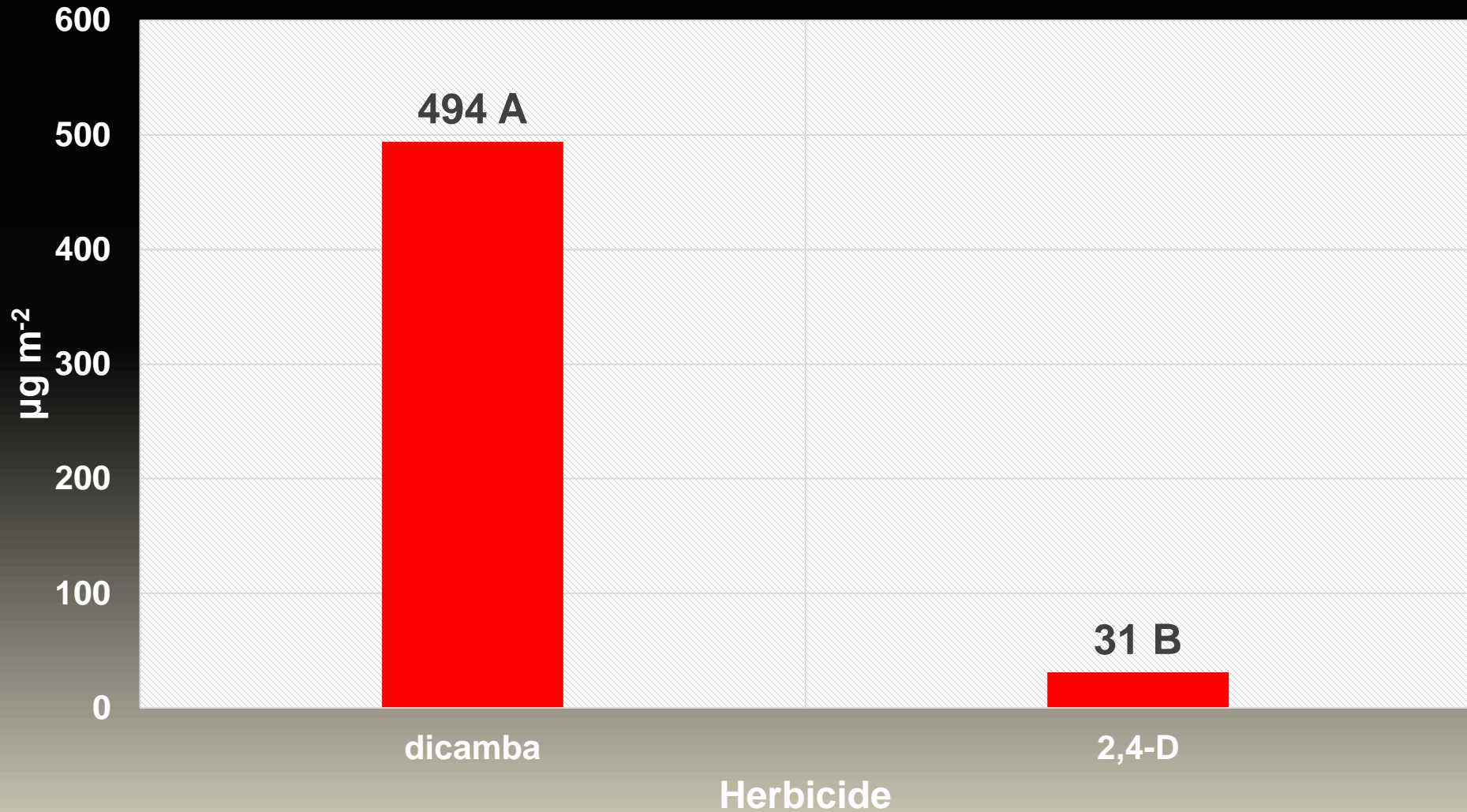
Cool Research



Not Even Remotely Close to Being Labeled but.....

Can 2,4-D and dicamba be washed from mulch?

Herbicide residues remaining on plastic mulch averaged over 15, 30, and 45 DAA timings



Squash Response to Dicamba



> 1.4 inch of rain for 15 or more days

Squash Response to 2,4-D



2,4-D

> 1.4 inch of rain for 15 or more days

Broccoli/Collard Response to 2,4-D Preplant



No Herbicide



2,4-D
No holes
washed

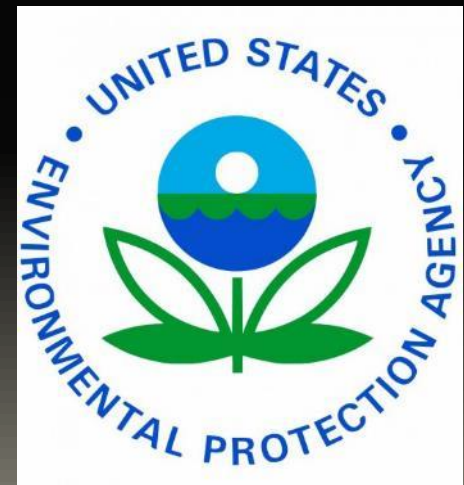


2,4-D
Holes
washed

Cooperation And Education



**Georgia
Farmers**



Consultants

**Industry
Partners**

Cooperation And Education

Georgia

**Support by the Vegetable Commodity
Commission Makes These
Efforts Possible**

R-4
Project 

**Industry
Partners**